

Forensic Outreach and Liaison Services in Adult Medium and Low Secure Services

Appendix 2



About this document



This document was made by CHANGE, a charity led by people with learning disabilities.

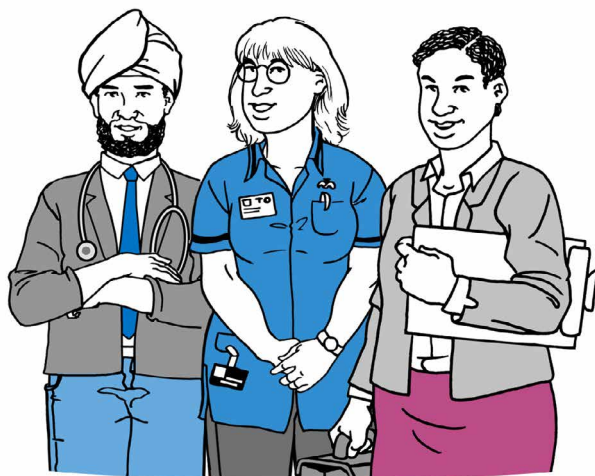


This document uses easy words and pictures to help you understand more about the changes to adult secure mental health services.



You might want to read through it with someone else to help you to understand it more.

Scope



This document looks at Forensic Outreach and Liaison Services (FOLS) in adult medium and low secure services.



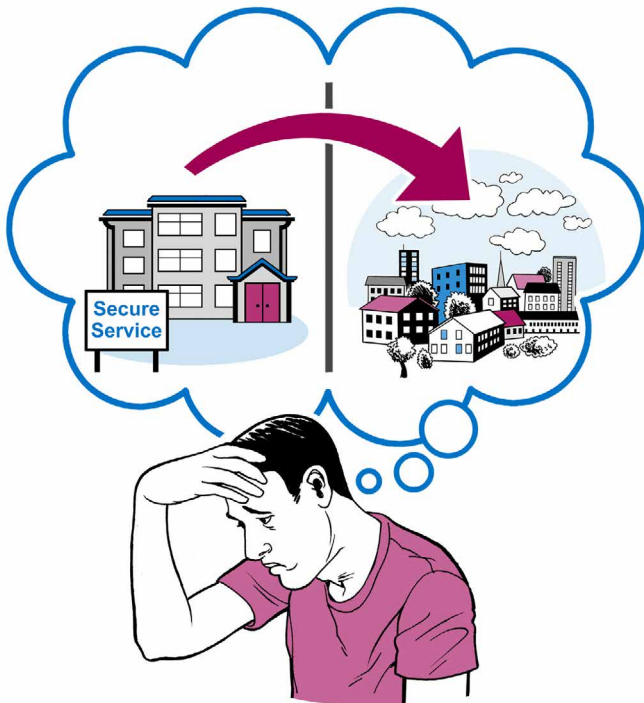
FOLS help patients with mental disorders move from secure services into the community.



These patients still present a level of risk to others, but with the right care they are not likely to relapse or offend again.



They provide expert advice, offer consultation and help liaise with other mental health services.



Moving back into the community can be very difficult for patients who have spent time in secure services.



FOLS helps them by offering ongoing care and support from the teams with the right level of experience.

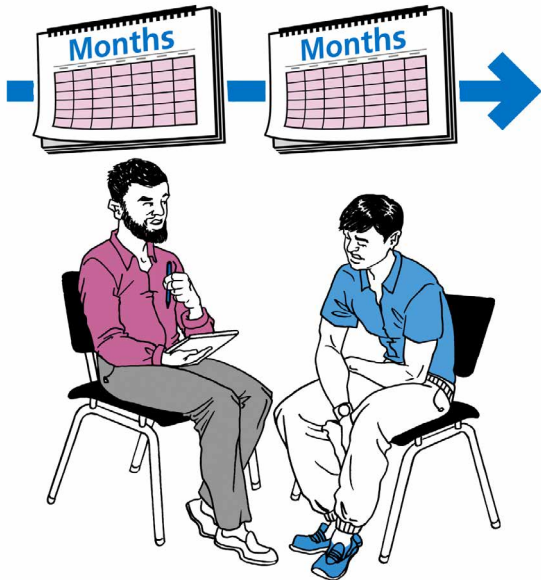
Care Pathway



FOLS provide specialist and expert advice on the assessment and management of mentally disordered offenders who pose a risk to others.

They work with local mental health services to make sure that people are admitted to secure services only if they really need to be.

They support the patient in moving from the care of secure services to that of Community Mental Health Team.



If needed, FOLS can continue their support for as long as required to help patients who require specialist risk management.



FOLS will get involved in a patient's Care Pathway as soon as required, while they are still in secure services.

Outcomes



FOLS aims to support patients move from secure services into the community in a way that is timely, safe and efficient.



This easy read document has been produced by CHANGE
www.changepeople.org