

Moving people to and from mental health hospitals



NHS England and NHS Improvement



Contents

Page



Introduction

3



People with a mental health condition in a prison or an immigration removal centre

4



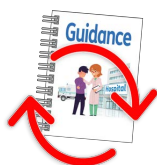
Why change?

6



What people have said

8



Our suggested changes

9



What do you think?

11



What next?

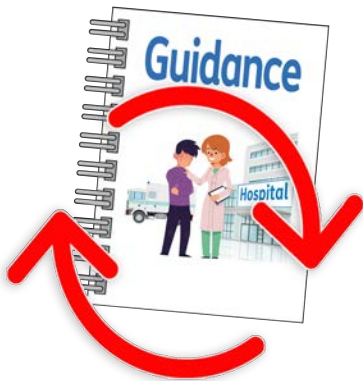
12



For more information

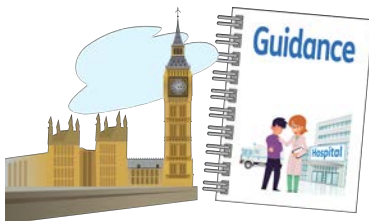
13

Introduction

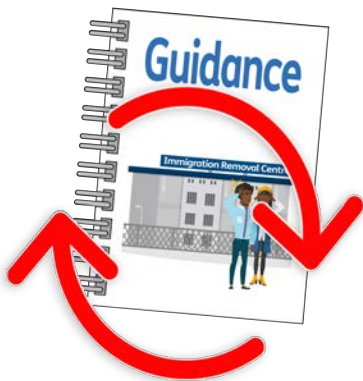


This document is about:

- Proposed changes to the **guidance** about moving prisoners with a mental health condition between prison and a mental health hospital.



The **guidance** is help and advice written by the government. It tells staff in the different services what they have to do.



- New guidance about moving people in an **immigration removal centre** to and from mental health hospitals.



An **immigration removal centre** is where people are kept while the law decides if they can stay in the country or not.

People with a mental health condition in a prison or an immigration removal centre



Many prisoners and people being kept in an immigration removal centre have a mental health condition.



Most can be treated by mental health services in a prison or an immigration removal centre.



Some need to be treated in a mental health hospital.

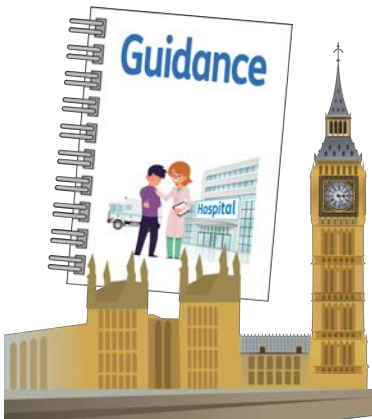


The Mental Health Act 1983

The Mental Health Act 1983 is the law that covers services for people with a mental health condition.

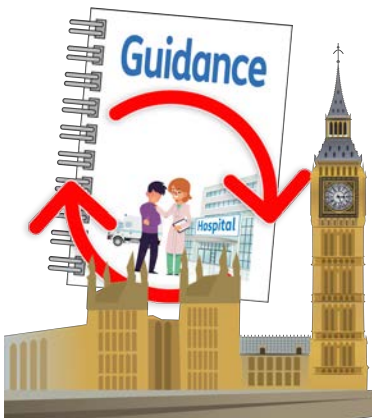


It says that people who are being held by law have to be able to get treatment quickly.



Guidance for prisoners

The government has already given guidance about how prisoners with mental health conditions are moved to and from a mental health hospital.



We are now looking at changing this guidance. This document explains the changes we want to make.



Guidance for people in immigration removal centres

At the moment there is no guidance for people in immigration removal centres who need to get treatment for a mental health condition.

Why change?

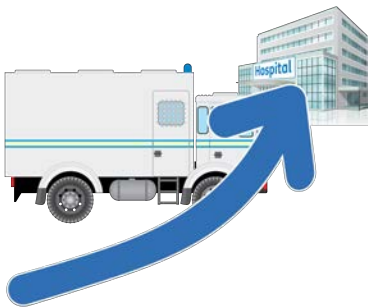


Moving people in good time

The current guidelines do not say what should happen if people need help quickly.



Recently the government looked at delays to moving prisoners with a mental health condition.



They said that staff should make it easier for prisoners to be moved quickly.



Plans to improve mental health

The government's plans to improve mental health said that there should be better guidance for moving prisoners to and from mental health hospitals.



A review of the Mental Health Act

In 2018 the government looked at the Mental Health Act.



They said that people in prison or an immigration removal centre should not have to wait more than 28 days from the decision to go to a mental health hospital to when they are moved.

They also said that:

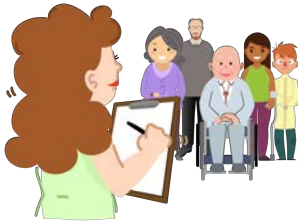


- People in prison or an immigration removal centre should not have to wait more than 14 days between seeing a doctor and seeing a mental health specialist doctor



- People in prison or an immigration removal centre should not have to wait more than 14 days between seeing the mental health specialist doctor and being moved to a mental health hospital

What people have said

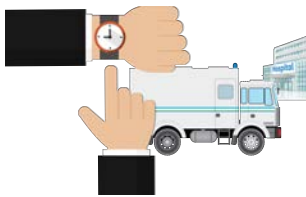


In 2018 we asked people what they thought about moving people in a prison or an immigration removal centre to and from a mental health hospital.

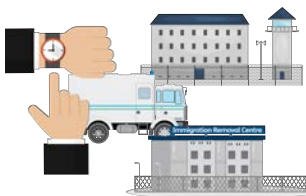


We spoke to family members, carers, prison staff, mental health staff, immigration removal centre staff and lawyers.

They said:



- It should not take so long to move people to and from a mental health hospital



- It can take too long to move people to and from prison, and to and from an immigration removal centre

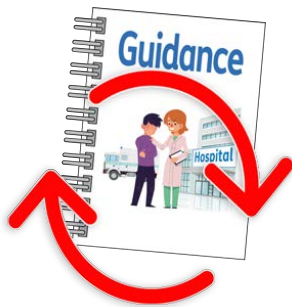


- Prisons and immigration removal centres are different and need different guidance



- There needs to be a proper way of deciding what happens when staff don't agree what to do

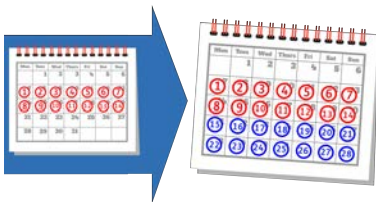
Our suggested changes



We suggest changing the **guidance** about moving prisoners with a mental health condition between prison and a mental health hospital so that:



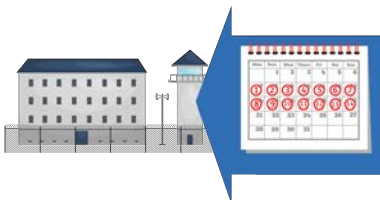
- Prisoners should not have to wait more than 28 days from first seeing a doctor to being moved to a mental health hospital



Previously prisoners had to be moved within 14 days.



The extra time would mean that we could check the mental health of prisoners better.



- Prisoners should go back to prison within 14 days of finishing their treatment in the mental health hospital

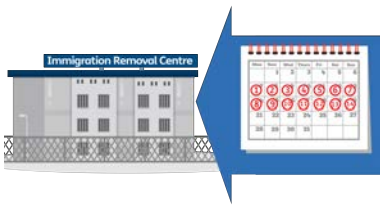


- There is a new way of deciding what happens when staff don't agree what to do



This new guidance would say that:

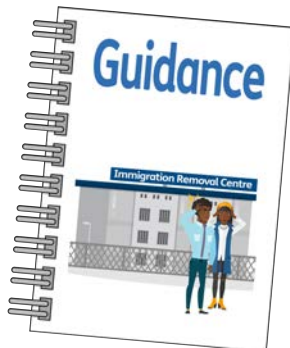
- People should not have to wait more than 28 days before being moved to a mental health hospital



- People should return to the immigration removal centre within 14 days of finishing the hospital treatment



- There is a new way of deciding what happens when staff don't agree what to do



We also suggest writing some new guidance about moving people with a mental health problem who are being kept in an immigration removal centre.

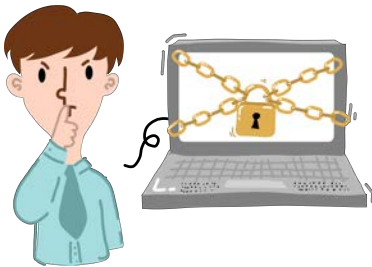
What do you think?



We want to know what you think.



Please tell us what you think about the proposed changes to this guidance by completing either or both of the 2 separate questionnaires.



We will keep your personal information safe, private and confidential. We will not share it with anyone.



We need your answers by midnight on Friday, 19 July 2019.

What next?



Your views will help us to write a report about the suggested changes to the guidance.



When we have written the report, you will be able to read it.



We will tell you about what happens after that.

For more information



If you need more information, please contact us by:



Email:

england.healthandjustice@nhs.net



Post:

**Health and Justice
Specialised Commissioning
NHS England and NHS Improvement
Third Floor, Skipton House
80 London Road
London
SE1 6LU**

Easy read by **easy-read-online.co.uk**